



ENHANCING SAFETY WITH TECHNOLOGY



May 8, 2025

Ergo. Evaluations



Wearables



VAI Cameras



**Virtual Reality Safety
Training**



Fit for Duty Testing



**Safety Management
Platforms**



Fleet Safety Technology



**Technologies
That Enhance
Workplace
Safety**

Ergo. Evaluations

```
graph LR; A[Ergo. Evaluations] --- B[What is it?]; A --- C[Benefits]; A --- D[Vendors];
```

What is it?

The software analyzes a video of a worker performing a task to identify the risk of an ergonomic related injury.

Benefits

Quantified Risk Scoring
Improved Training
Increased Efficiency

Vendors

TuMeke Ergonomics	<i>Cerebrum Edge</i>
<i>Kinetica Labs</i>	<i>Soter Analytics</i>
<i>Inseer</i>	

* Amerisure does not have a partnership with italicized vendors

Wearables



What is it?

Wearables are sensors and exoskeletons that monitor or assist an employee.

Types of Wearables

- Ergonomic Assistance
- Lone Worker Safety
- Monitor Unsafe Postures/Movements

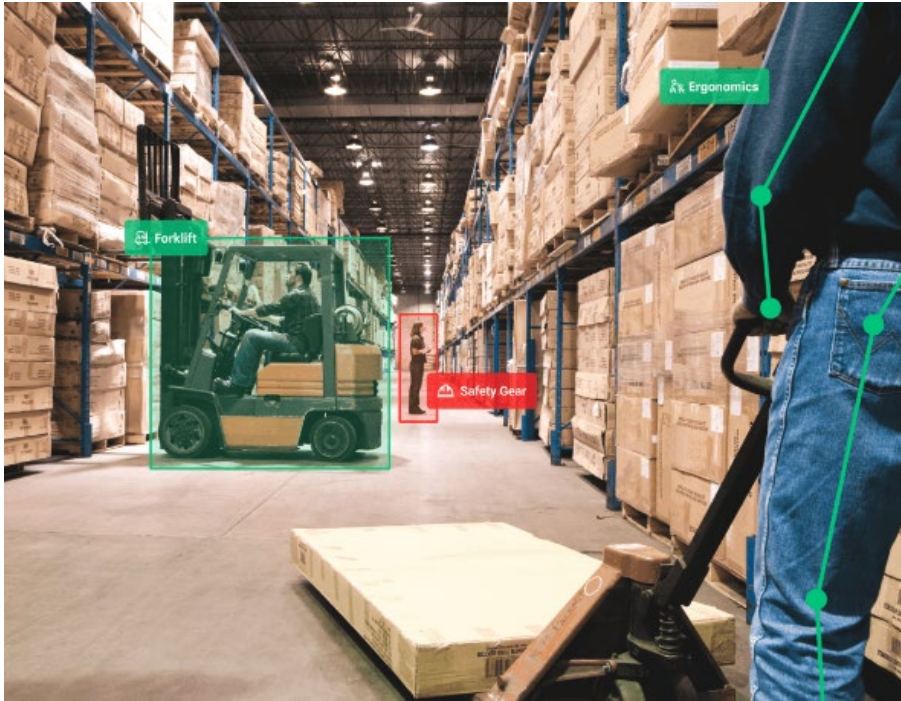
Vendors

StrongArm
Altum AI
Bardavon

Modjoul
Ottobock
HeroWear

* Amerisure does not have a partnership with italicized vendors

VAI Cameras



What is it?

Cameras equipped with artificial intelligence which detects hazards and notifies management.

Types of VAI Testing

Building Surveillance System
Smart Dash Cameras
Smart Equipment Cameras

Vendors

Voxel Safety
IntensEye
ProtexAI

Visionify
VIA Tech
Matrix

* Amerisure does not have a partnership with italicized vendors

VR Safety Training



What is it?

Using virtual reality to provide a safe place for employees to learn hazardous skills.

Benefits

Improved Learner Retention
Increased Class Engagement
Safe Space to “Fail”

Vendors

PixoVR
Hardhat VR
FreeRangeXR

FTF VR
Lobaki VR
SketchBox

* Amerisure does not have a partnership with italicized vendors

VR Safety Training

What is it?

Using virtual reality to provide a safe place for employees to learn hazardous skills.

Benefits

Improved Learner Retention
Increased Class Engagement
Safe Space to “Fail”

Vendors

PixoVR
HardHat VR
FreeRangeXR

FTF VR
Lobaki VR
Shiift

* Amerisure does not have a partnership with italicized vendors

Fit for Duty Testing



What is it?

Electronic testing allows for daily testing of drugs and/or alcohol of employees in Safety Sensitive jobs.

Types of Testing

- App Based
- Device Based
- Drug/Alcohol Detection

Vendors

Alert Meter
SobrSafe
Gaize

Otorize
Hound Labs
Cannabix

* Amerisure does not have a partnership with italicized vendors

Fit for Duty Testing

```
graph LR; A[Fit for Duty Testing] --- B[What is it?]; A --- C[Types of Testing]; A --- D[Vendors];
```

What is it?

Electronic testing allows for daily testing of drugs and/or alcohol of employees in Safety Sensitive jobs.

Types of Testing

App Based vs. Device Based
Fit For Duty Testing vs. Impairment Testing

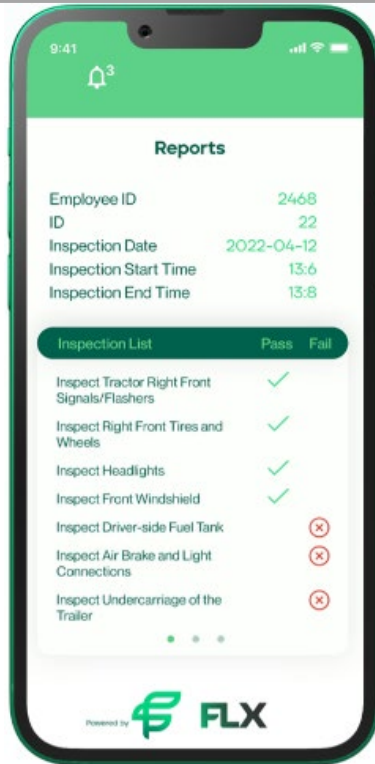
Vendors

Alert Meter
SobrSafe
Gaize

Otorize
Hound Labs
Cannabix

* Amerisure does not have a partnership with italicized vendors

Safety Platforms



What is it?

Software platforms that allow all aspects of your safety program to be managed virtually.

Benefits

Paperless	Remote Assistance
Efficiency	Improved Documentation
Analysis	Improved Accountability

Vendors

FLX Systems
SafetyReports.com
iAuditor/Safety Culture

* Amerisure does not have a partnership with italicized vendors

Safety Platforms



What is it?

Software platforms that allow all aspects of your safety program to be managed virtually.

Benefits

Paperless	Remote Assistance
Efficiency	Improved Documentation
Analysis	Improved Accountability

Vendors

FLX Systems
SafetyReports.com
iAuditor/Safety Culture

* Amerisure does not have a partnership with italicized vendors

AI Smart Dash Cameras

What is it?

Dash Cameras that use Artificial Intelligence to observe the environment and create dynamic alerts, analysis, and driver training

Benefits

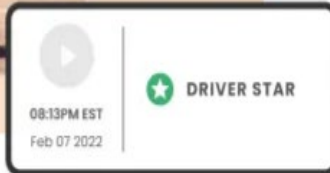
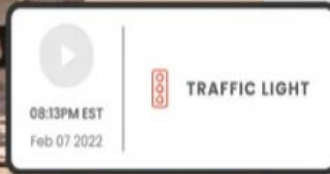
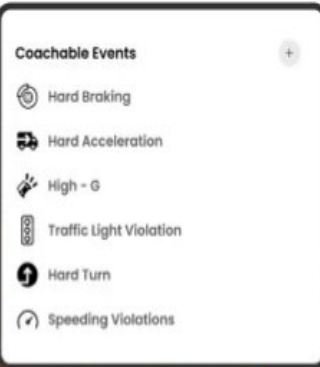
Reduces losses
Claims Defense
Automates Driver Training

Vendors

GPSInsight	<i>Lytx</i>
Netradyne	
Samsara	

* Amerisure does not have a partnership with italicized vendors

Automated Driver Training



What is it?

A LMS or app that delivers tailored training content to drivers based upon their telematics and/or dash cam performance.

Benefits

Reduced Admin.
Relevant Training
Documentation

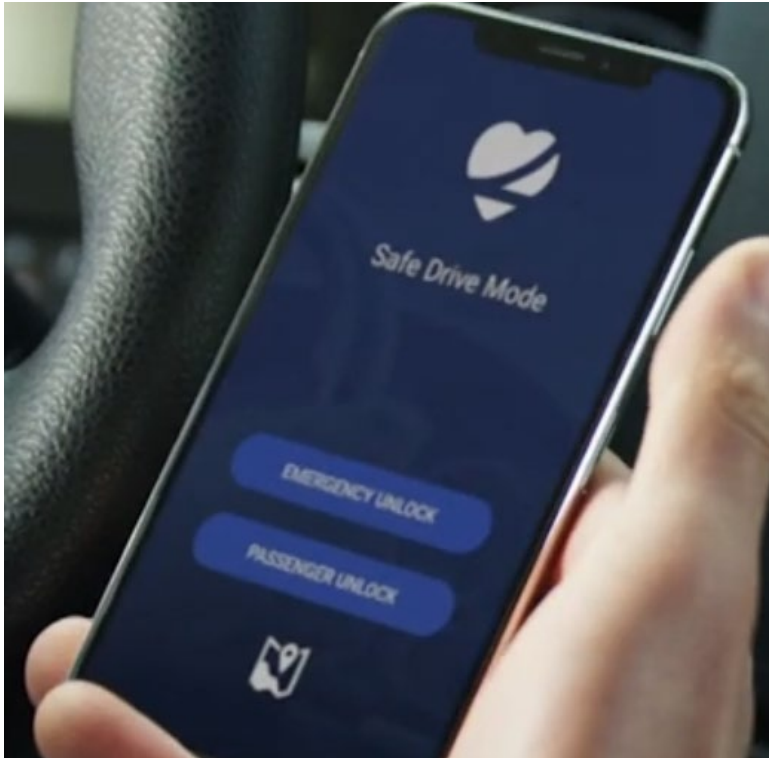
Timely Training
Improved Safety

Vendors

Netradyne (Driver-i AI cameras)
Clear Connect
Edriving.com (Mentor)
Fleet Response (V-Link)

* Amerisure does not have a partnership with italicized vendors

Cellphone Blocking



What is it?

App or hardware that restricts the usage of phones while operating the vehicle.

Benefits

- Reduce likelihood of nuclear verdicts
- Customizable solutions
- Improve safety

Vendors

LifeSaver
TRUCE
NoCell

* Amerisure does not have a partnership with italicized vendors

MVR Monitoring



What is it?

A system that continually checks enrolled drivers' Motor Vehicle Records (MVRs) & alerts management of any changes in MVR status.

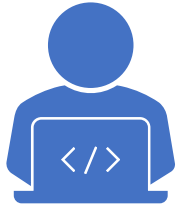
Benefits

Timely feedback Improves Safety
Typically Reduces Costs
Reduces Likelihood of Nuclear Verdicts

Vendors

iiX (Verisk)	<i>Foley Services</i>
Samba Safety	<i>JJ Keller Data Sense</i>
Clear Connect	<i>ESuperVision</i>

* Amerisure does not have a partnership with italicized vendors



Questions?

Ryan Anderson, MBA, CRM, CSP

Amerisure Insurance

Risk Management Technology Program Manager

RAnderson@amerisure.com

(757) 469-4343

Ashley Parker, MS, CSP, CRIS

Amerisure Insurance

Senior Risk Management Consultant

AParker@amerisure.com

(804) 337-2863

